



ASI-T-3501RA1EN/A

Item	Contents
LCD type	AIFF/Transflective/Normally black
Size	3.5
Viewing direction	Wide viewing
LCM (W × H × D)	64.00×85.00×3.10
Active area (W×H)	53.568×71.424
Dot pitch (W×H)	0.0372×0.1116
Number of dots	480 (RGB) × 640
Driver IC	HX8363A
Backlight type	6 LEDs
Interface type	18bit RGB
Color depth	262K
Pixel configuration	R.G.B vertical stripe
Surface treatment	TBD
Input voltage	2.8
With/Without TSP	Without TSP
Weight	TBD

Note 1: RoHS compliant;

Note 2: LCM weight tolerance: ± 5% .



CONTENTS

- GENERAL INFORMATION
- EXTERNAL DIMENSIONS
- ABSOLUTE MAXIMUM RATINGS
- ELECTRICAL CHARACTERISTICS
- BACKLIGHT CHARACTERISTICS
- ELECTRO-OPTICAL CHARACTERISTICS
- INTERFACE DESCRIPTION
- APPLICATION NOTES
- RELIABILITY TEST
- INSPECTION CRITERION
- PRECAUTIONS FOR USING LCD MODULES
- PRIOR CONSULT MATTER



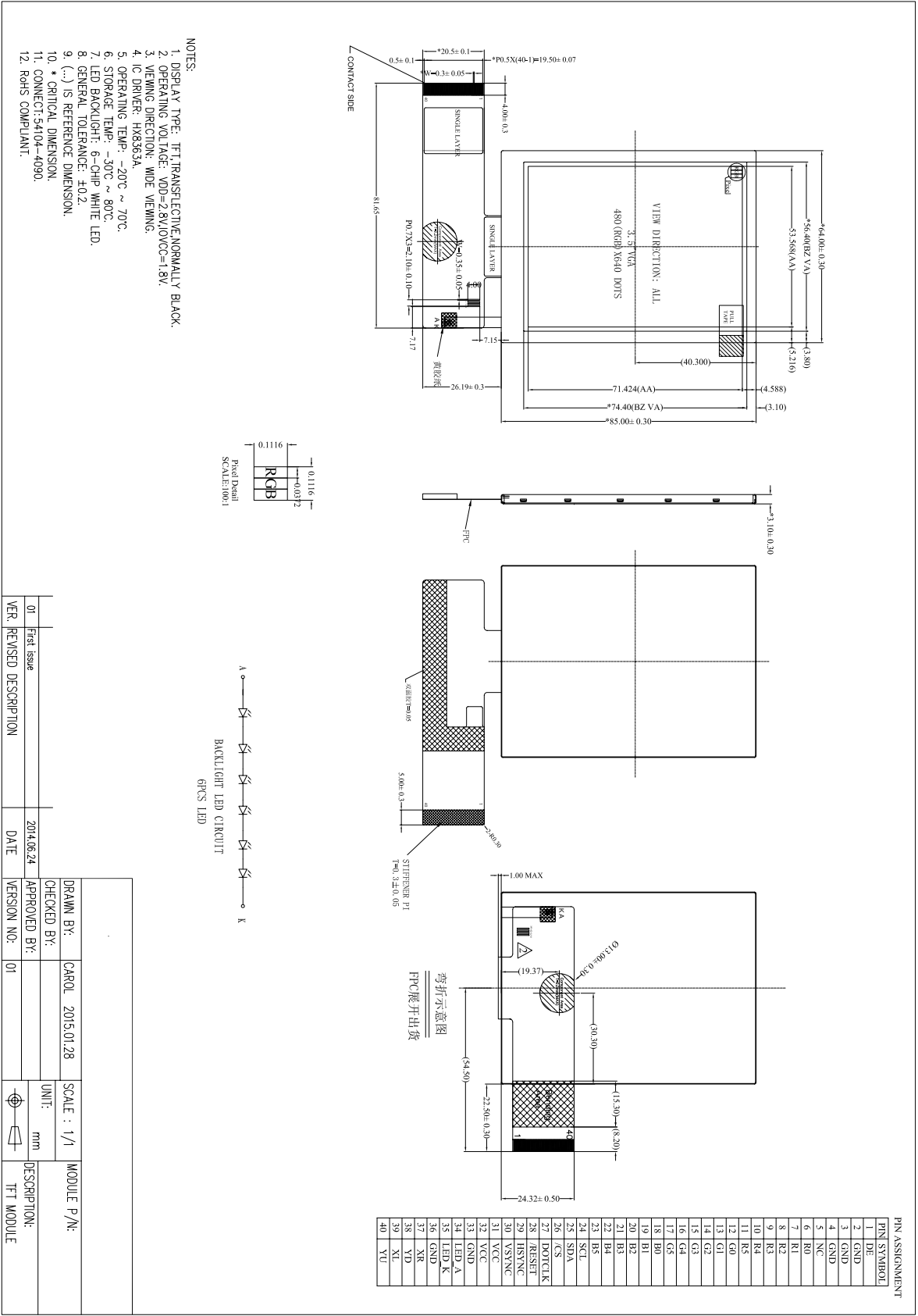
■ GENERAL INFORMATION

Item	Contents	Unit
LCD type	AIFF/Transflective/Normally black	/
Size	3.5	Inch
Viewing direction	Wide viewing	O' Clock
LCM (W × H × D)	64.00×85.00×3.10	mm ³
Active area (W×H)	53.568×71.424	mm ²
Dot pitch (W×H)	0.0372×0.1116	mm ²
Number of dots	480 (RGB) × 640	/
Driver IC	HX8363A	/
Backlight type	6 LEDs	/
Interface type	18bit RGB	/
Color depth	262K	/
Pixel configuration	R.G.B vertical stripe	/
Surface treatment	TBD	/
Input voltage	2.8	V
With/Without TSP	Without TSP	/
Weight	TBD	g

Note 1: RoHS compliant;

Note 2: LCM weight tolerance: ± 5% .

EXTERNAL DIMENSIONS



■ ABSOLUTE MAXIMUM RATINGS

Parameter	Symbol	Min	Max	Unit
Analog supply voltage	VCC	-0.3	4.6	V
Operating temperature	T _{OP}	-20	70	°C
Storage temperature	T _{ST}	-30	80	°C
Storage humidity	HD	20	90	%RH

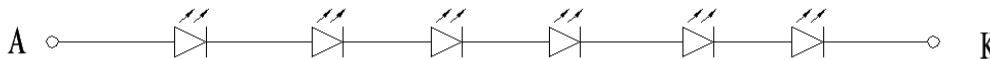
Note : VIN: R0-R5,G0-G5,B0-B5,ENABLE,DCLK,HSYNC,VSYNV,/CS,SCL,SDI,SDO/RESET.

■ ELECTRICAL CHARACTERISTICS

Parameter	Symbol	Min	Typ	Max	Unit	Remark
Analog supply voltage	VCC	2.3	2.8	3.3	V	
Input voltage ' H ' level	V _{IH}	0.7IOVCC	-	IOVCC	V	Digital input pins
Input voltage ' L ' level	V _{IL}	GND	-	0.3IOVCC	V	Digital input pins
Output voltage ' H ' level	V _{OH}	0.8IOVCC	-	IOVCC	V	I _{OH} =-0.1mA
Output voltage ' L ' level	V _{OL}	GND	-	0.2IOVCC	V	I _{OH} =-0.1mA IOVCC=1.65~2.4V
I/O leak current	ILI	-1	-	1	uA	

■ BACKLIGHT CHARACTERISTICS

Item	Symbol	Min.	Typ.	Max.	Unit	Condition
Supply voltage	V _f	18.0	19.2	21.0	V	6 LEDs serial
Supply current	I _f	-	20	-	mA	
Luminous intensity for LCM	-	-	120	-	cd/m ²	
Uniformity for LCM	-	80	-	-	%	
Operating life time	-	50000	-	-	Hrs	



■ELECTRO-OPTICAL CHARACTERISTICS

1.Transmissive mode

Item	Symbol	Specifications			Unit	Note
		Min.	Typ.	Max.		
Contrast ratio	Cr ($\Theta=0^\circ$)	-	250	-		Note1
Response time (25°C)	T _r +T _f	-	30	50	ms	
Viewing angle (Cr≥ 10)*	Θ21	60	80	-	deg	
	Θ22	60	80	-		
	Θ12	60	80	-		
	Θ11	60	80	-		
Chromaticity of CF	Red	x	0.618	0.638	0.658	Chromaticity measuring machine: CFT-01. Reference Only
		y	0.310	0.330	0.350	
		Y	15.1	20.1	25.1	
	Green	x	0.284	0.304	0.324	
		y	0.555	0.575	0.595	
		Y	54.3	59.3	64.3	
	Blue	x	0.135	0.155	0.175	
		y	0.140	0.160	0.180	
		Y	14.5	19.5	24.5	
	White	x		0.312		
		y		0.346		
		Y		33.0		
Color gamut of CF (NTSC%)	S		60		%	

2.Reflective mode (without the backlight)

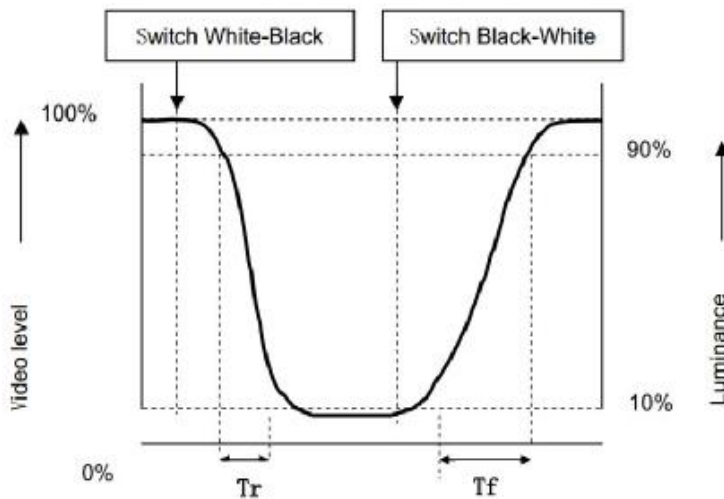
Item	Symbol	Specifications			Unit	Note
		Min.	Typ.	Max.		
Reflection Ratio (With Polarizer)	R ($\theta = \phi = 0^\circ$)	-	7	-	%	Here the data are design value.
Reflective Contrast Ratio	Cr ($\theta = 0^\circ$)	-	15	-		Note1
Viewing angle (Cr≥ 2)*	Θ21	-	45	-	deg	
	Θ22	-	45	-		
	Θ12	-	45	-		
	Θ11	-	45	-		

Note1: The polarizers are SRCG31APN2HC5(Top) and SRCH31APT2(Bottom)。

3. Definitions and measuring methods

[1] Response Time (Tr, Tf)

The rise time 'Tr' is defined as the time for luminance to change from 90% to 10% as a result of a change of the electrical condition. The fall time 'Tf' is defined as the time for luminance to change from 10% to 90% as a result of a change of the electrical condition.

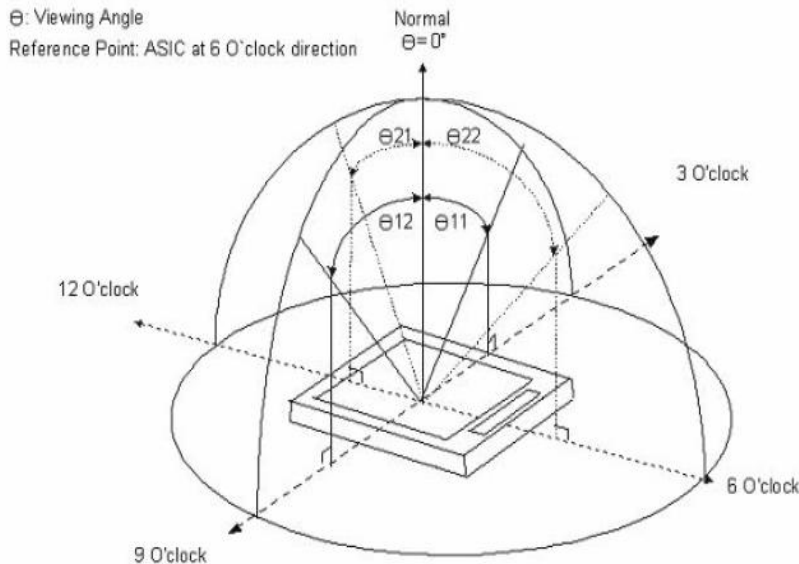


[2] Contrast ratio (Cr)

The contrast ratio (Cr), measured on a module, is the ratio between the luminance (L_w) in a full white area (R=G=B=1) and the luminance (L_d) in a dark area (R=G=B=0):

$$Cr = \frac{L_w}{L_d}$$

[3] Viewing angle diagram



[4] Definition of color gamut

Measuring machine: CFT-01. NTSC'S Primaries: R(x,y,Y)、G(x,y,Y)、 B(x,y,Y).

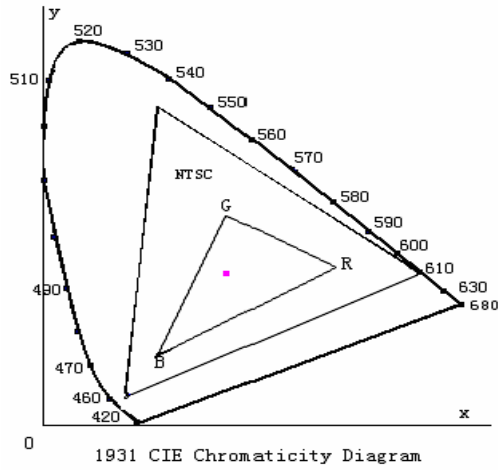


Fig. 1931 CIE chromaticity diagram

$$\text{Color gamut: } S = \frac{\text{Area of RGB triangle}}{\text{Area of NTSC triangle}} \times 100\%$$



■ INTERFACE DESCRIPTION

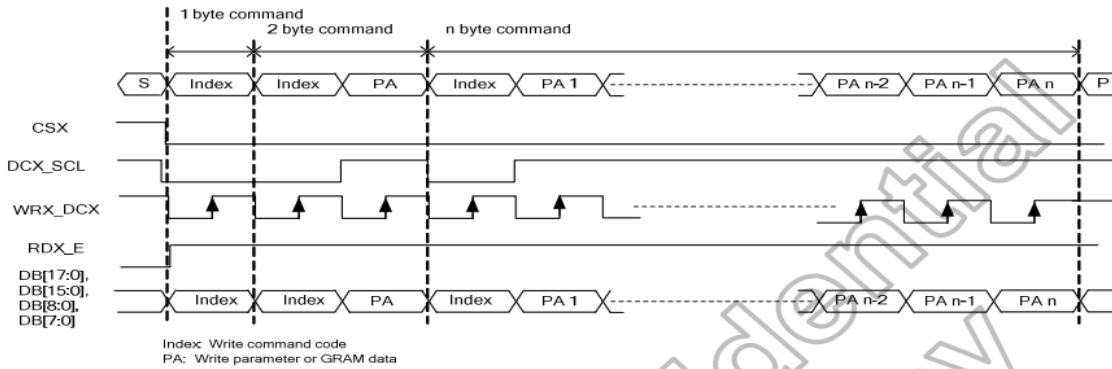
PIN NO.	PIN NAME	DESCRIPTION
1	DE	Display enable pin from controller
2	GND	Ground
3	GND	Ground
4	GND	Ground
5	NC	Not connected
6	R0	DBI TYPE- B interface
7	R1	
8	R2	
9	R3	
10	R4	
11	R5	
12	G0	
13	G1	
14	G2	
15	G3	
16	G4	
17	G5	
18	B0	
19	B1	
20	B2	
21	B3	
22	B4	
23	B5	
24	SCL	Clock input pin in serial mode
25	SDA	Data pin in serial mode
26	/CS	Chip select signal.
27	DOTCLK	Dot clock signal
28	/RESET	Reset pin
29	HSYNC	Line synchronization signal
30	VSYNC	Frame synchronization signal
31	IOVCC	A power supply for the I/O circuit
32	VCC	A power supply for the analog power
33	GND	Ground
34	LEDA	Power supply for backlight anode input terminals.
35	LEDK	Power supply for backlight cathode input terminals.
36	GND	Ground
37	NC(XR)	Not connected
38	NC(YD)	Not connected
39	NC(XL)	Not connected
40	NC(YU)	Not connected

■ APPLICATION NOTES

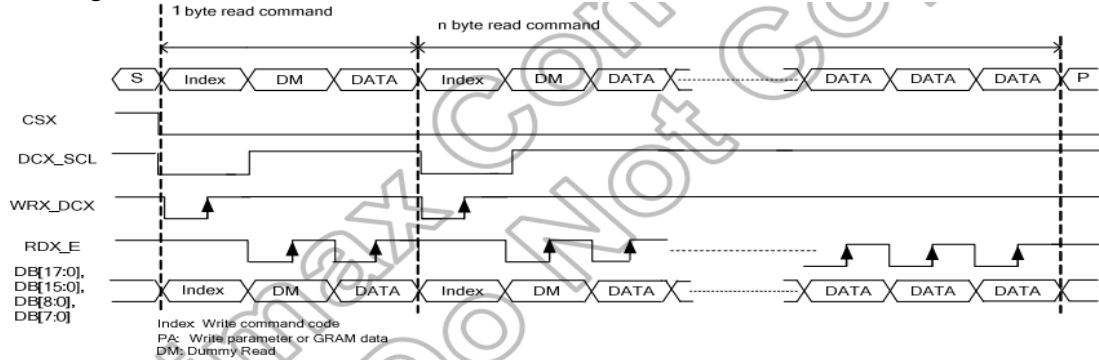
1. Timing Characteristics

1.1 DBI Type B Interface Timing Characteristics

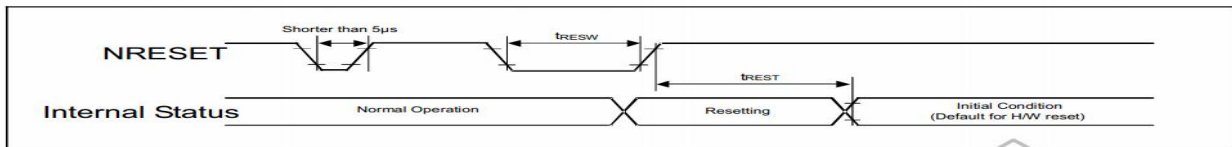
Write to register or GRAM



Read to register or GRAM



1.2 Reset Timing Characteristics



Symbol	Parameter	Related pins	Min.	Typ.	Max.	Note	Unit
t _{RESW}	Reset low pulse width ⁽¹⁾	NRESET	10	-	-	-	µs
t _{REST}	Reset complete time ⁽²⁾	-	5	-	-	When reset is applied during Sleep In mode	ms
		-	120	-	-	When reset is applied during Sleep Out mode	ms

■ RELIABILITY TEST

NO.	TEST ITEMS	TEST CONDITION	INSPECTION AFTER TEST
①	High Temperature Storage	80°C×120Hours	Inspection after 2~4hours storage at room temperature,the samples should be free from defects: 1,Air bubble in the LCD. 2,Seal leak. 3,Non-display. 4,Missing segments. 5,Glass crack. 6,Current IDD is twice higher than initial value. 7,The surface shall be free from damage. 8,The electric characteristic requirements shall be satisfied.
②	Low Temperature Storage	-30°C×120Hours	
③	High Temperature Operating	70°C×120Hours	
④	Low Temperature Operating	-20°C×120Hours	
⑤	Temperature Cycle(Storage)	$-30^{\circ}\text{C} \leftrightarrow 25^{\circ}\text{C} \leftrightarrow 85^{\circ}\text{C}$ (1Hour) (5min) (1Hour) ← 1 cycle → Total 100cycle	
⑥	Damp Proof Test (Storage)	60°C×90%RH×120Hours	
⑦	Vibration Test	Frequency:10Hz~55Hz~10Hz Amplitude:1.5M X,Y,Z direction for total 3hours (Packing Condition)	
⑧	Damp Heat Cyclic Temperature Operating	$25^{\circ}\text{C} \leftrightarrow 55^{\circ}\text{C}$ 90-98%RH, 6cycles= 144hrs	
⑨	Dropping Test	Drop to the ground from 1M height one time every side of carton. (Packing Condition)	
⑩	ESD Test	Voltage:±8KV,R:330Ω,C:150PF,Air Mode,10times	

REMARK:

- 1,The Test samples should be applied to only one test item.
- 2,Sample side for each test item is 5~10pcs.
- 3,For Damp Proof Test, Pure water(Resistance > 10MΩ)should be used.
- 4,In case of malfunction defect caused by ESD damage, if it would be recovered to normal state after resetting, it would be judge as a good part.
- 5,EL evaluation should be excepted from reliability test with humidity and temperature: Some defects such as black spot/blemish can happen by natural chemical reaction with humidity and Fluorescence EL has.
- 6,Failure Judgment Criterion: Basic Specification Electrical Characteristic, Mechanical Characteristic, Optical Characteristic.

■ INSPECTION CRITERION

OUTGOING QUALITY STANDARD	PAGE 1 OF 5
TITLE:FUNCTIONAL TEST & INSPECTION CRITERIA	

This specification is made to be used as the standard acceptance/rejection criteria for Color mobile phone LCM.

1 Sample plan

- 1.1 Lot size: Quantity per shipment lot per model
- 1.2 Sampling type: Normal inspection, Single sampling
- 1.3 Inspection level: II
- 1.4 Sampling table: MIL-STD-105D
- 1.5 Acceptable quality level (AQL)
 - Majot defect: AQL=0.65
 - Minor defect: AQL=1.00

2. Inspection condition

2.1 Ambient conditions:

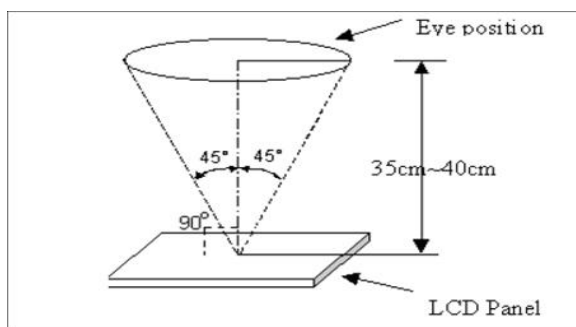
- a. Temperature: Room temperature $25 \pm 5^\circ\text{C}$
- b. Humidity: $(60 \pm 10)\% \text{RH}$
- c. Illumination: Single fluorescënt lamp non-directive (300 to 700 Lux)

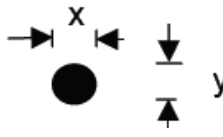
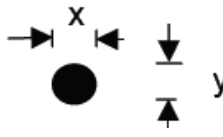
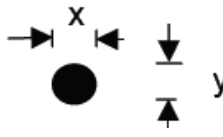
2.2 Viewing distance:

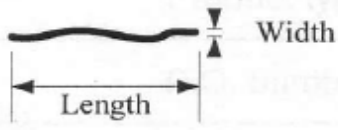

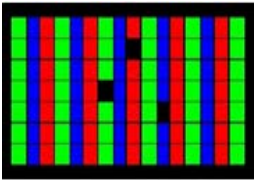
The distance between the LCD and the inspector' s eyes shall be at least $35 \pm 5\text{cm}$.

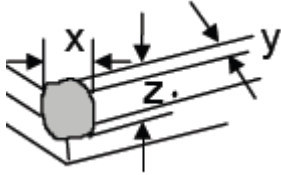
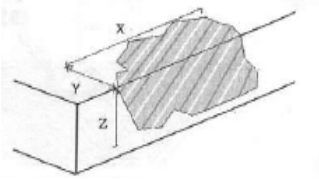
2.3 Viewing Angle

U/D: $45^\circ / 45^\circ$, L/R: $45^\circ / 45^\circ$



OUTGOING QUALITY STANDARD	PAGE 2 OF 5																												
TITLE:FUNCTIONAL TEST & INSPECTION CRITERIA																													
<p>3. Inspection standards</p> <p>Defects are classified as major defects and minor defects according to the degree of defectiveness defined herein.</p> <p>3.1 Major defect</p> <table border="1" style="width: 100%; border-collapse: collapse;"> <thead> <tr> <th style="width: 10%;">Item No</th> <th style="width: 20%;">Items to be inspected</th> <th style="width: 70%;">Inspection Standard</th> </tr> </thead> <tbody> <tr> <td>3.1.1</td> <td>All functional defects</td> <td>1) No display 2) Display abnormally 3) Short circuit 4) line defect</td> </tr> <tr> <td>3.1.2</td> <td>Missing</td> <td>Missing function component</td> </tr> <tr> <td>3.1.3</td> <td>Crack</td> <td>Glass crack</td> </tr> </tbody> </table> <p>3.2 Minor defect</p> <table border="1" style="width: 100%; border-collapse: collapse;"> <thead> <tr> <th style="width: 10%;">Item No</th> <th style="width: 20%;">Items to be inspected</th> <th style="width: 70%;">Inspection standard</th> </tr> </thead> <tbody> <tr> <td rowspan="4" style="text-align: center; vertical-align: middle;">3.2.1</td> <td rowspan="4" style="vertical-align: middle;"> Spot Defect Including Black spot White spot Pinhole Foreign particle Polarizer dirt </td> <td> For dark/white spot is defined $\varphi = (x+y) / 2$  </td> </tr> <tr> <td style="text-align: center;">Size φ(mm)</td> <td style="text-align: center;">Acceptable Quantity</td> </tr> <tr> <td style="text-align: center;">$\varphi \leq 0.10$</td> <td style="text-align: center;">Ignore</td> </tr> <tr> <td style="text-align: center;">$0.10 < \varphi \leq 0.20$</td> <td style="text-align: center;">3</td> </tr> <tr> <td></td> <td></td> <td style="text-align: center;">$0.20 < \varphi$</td> <td style="text-align: center;">Not allowed</td> </tr> </tbody> </table>		Item No	Items to be inspected	Inspection Standard	3.1.1	All functional defects	1) No display 2) Display abnormally 3) Short circuit 4) line defect	3.1.2	Missing	Missing function component	3.1.3	Crack	Glass crack	Item No	Items to be inspected	Inspection standard	3.2.1	Spot Defect Including Black spot White spot Pinhole Foreign particle Polarizer dirt	For dark/white spot is defined $\varphi = (x+y) / 2$ 	Size φ (mm)	Acceptable Quantity	$\varphi \leq 0.10$	Ignore	$0.10 < \varphi \leq 0.20$	3			$0.20 < \varphi$	Not allowed
Item No	Items to be inspected	Inspection Standard																											
3.1.1	All functional defects	1) No display 2) Display abnormally 3) Short circuit 4) line defect																											
3.1.2	Missing	Missing function component																											
3.1.3	Crack	Glass crack																											
Item No	Items to be inspected	Inspection standard																											
3.2.1	Spot Defect Including Black spot White spot Pinhole Foreign particle Polarizer dirt	For dark/white spot is defined $\varphi = (x+y) / 2$ 																											
		Size φ (mm)	Acceptable Quantity																										
		$\varphi \leq 0.10$	Ignore																										
		$0.10 < \varphi \leq 0.20$	3																										
		$0.20 < \varphi$	Not allowed																										

OUTGOING QUALITY STANDARD		PAGE 3 OF 5	
TITLE:FUNCTIONAL TEST & INSPECTION CRITERIA			
3.2.2	Line Defect Including Black line White line Scratch	Define: 	
		Width(mm) Length(mm)	Acceptable Quantity
		$W \leq 0.02$	Ignore
		$0.02 < W \leq 0.05$ $L \leq 3.0$	2
		$0.05 < W$	Not allowed
3.2.3	Polarizer Dent/Bubble	Size ϕ (mm)	Acceptable Quantity
		$\phi \leq 0.2$	Ignore
		$0.2 < \phi \leq 0.3$	2
		$0.3 < \phi \leq 0.5$	1
		$0.5 < \phi$	Not allowed
		Total QTY	3
3.2.4	Electrical Dot Defect	Bright and Black dot define:  and 	
		Inspection pattern: Full white, Full black, Red, green and blue screens	
		Item	Acceptable Quantity
		Black dot defect	2
		Bright dot defect	0
Total Dot	2		

OUTGOING QUALITY STANDARD		PAGE 4 OF 5	
TITLE:FUNCTIONAL TEST & INSPECTION CRITERIA			
3.2.5	Touch panel defect	 <p>1. Corner Fragment:</p>	
		Size(mm)	Acceptable Quantity
		$X \leq 3\text{mm}$ $Y \leq 3\text{mm}$ $Z \leq T$	Ignore T: Glass thickness X: Length Y: Width Z: thickness
		 <p>2. Side Fragment:</p>	
		Size(mm)	Acceptable Quantity
		$X \leq 5.0\text{mm}$ $Y \leq 3\text{mm}$ $Z \leq T$	Ignore T: Glass thickness X: Length Y: Width Z: thickness
3.2.6	Touch panel spot	Size ϕ (mm)	Acceptable Quantity
		$\phi \leq 0.15$	Ignore
		$0.15 < \phi \leq 0.25$	3
		$0.25 < \phi$	0



OUTGOING QUALITY STANDARD	PAGE 5 OF 5
TITLE:FUNCTIONAL TEST & INSPECTION CRITERIA	

		Width(mm) Length(mm)	Acceptable Quantity
3.2.7	Touch panel White line Scratch	$W \leq 0.03$	Ignore
		$0.03 < W \leq 0.05$ $L \leq 5.0$	3
		$0.05 < W$ or $L > 5$	Not allowed
		Compare with limit sample	
3.2.8	Touch panel Newton ring	Compare with limit sample	

- Note:
1. Dot defect is defined as the defecti ve area of the dot area is larger than 50% of the dot area .
 2. The distance between two bright dot defects (red, green, blue, and white) should be larger than 15mm;
 3. The distance between black dot defects or black and bright dot defects should be more than 5mm apart.
 4. Polarizer bubble is defined as the bubble appears on active display area. The defect of polarizer bubble shall be ignored if the polarizer bubble appears on the outside of active display area.



■ PRECAUTIONS FOR USING LCD MODULES

Handling Precautions

(1) The display panel is made of glass and polarizer. As glass is fragile. It tends to become or chipped during handling especially on the edges. Please avoid dropping or jarring. Do not subject it to a mechanical shock by dropping it or impact.

(2) If the display panel is damaged and the liquid crystal substance leaks out, be sure not to get any in your mouth. If the substance contacts your skin or clothes, wash it off using soap and water.

(3) Do not apply excessive force to the display surface or the adjoining areas since this may cause the color tone to vary. Do not touch the display with bare hands. This will stain the display area and degraded insulation between terminals (some cosmetics are determined to the polarizer).

(4) The polarizer covering the display surface of the LCD module is soft and easily scratched. Handle this polarizer carefully. Do not touch, push or rub the exposed polarizers with anything harder than an HB pencil lead (glass, tweezers, etc.). Do not put or attach anything on the display area to avoid leaving marks on. Condensation on the surface and contact with terminals due to cold will damage, stain or dirty the polarizer. After products are tested at low temperature they must be warmed up in a container before coming is contacting with room temperature air.

(5) If the display surface becomes contaminated, breathe on the surface and gently wipe it with a soft dry cloth. If it is heavily contaminated, moisten cloth with one of the following solvents

- Isopropyl alcohol
- Ethyl alcohol

Do not scrub hard to avoid damaging the display surface.

(6) Solvents other than those above-mentioned may damage the polarizer. Especially, do not use the following.

- Water
- Ketone
- Aromatic solvents

Wipe off saliva or water drops immediately, contact with water over a long period of time may cause deformation or color fading. Avoid contacting oil and fats.

(7) Exercise care to minimize corrosion of the electrode. Corrosion of the electrodes is accelerated by water droplets, moisture condensation or a current flow in a high-humidity environment.

(8) Install the LCD Module by using the mounting holes. When mounting the LCD module make sure it is free of twisting, warping and distortion. In particular, do not forcibly pull or bend the I/O cable or the backlight cable.

(9) Do not attempt to disassemble or process the LCD module.

(10) NC terminal should be open. Do not connect anything.

(11) If the logic circuit power is off, do not apply the input signals.

(12) Electro-Static Discharge Control, Since this module uses a CMOS LSI, the same careful attention should be paid to electrostatic discharge as for an ordinary CMOS IC. To prevent destruction of the elements by static electricity, be careful to maintain an optimum work environment.

- Before remove LCM from its packing case or incorporating it into a set, be sure the module and your body have the same electric potential. Be sure to ground the body when handling the LCD modules.

- Tools required for assembling, such as soldering irons, must be properly grounded. make certain the AC power source for the soldering iron does not leak. When using an electric screwdriver to attach LCM, the screwdriver should be of ground potentiality to minimize as much as possible any transmission of electromagnetic waves produced sparks coming from the commutator of the motor.

- To reduce the amount of static electricity generated, do not conduct assembling and other work under dry conditions. To reduce the generation of static electricity be careful that the air in the work is not too dried. A relative humidity of 50%-60% is recommended. As far as possible make the electric potential of your work clothes and that of the work bench the ground potential

- The LCD module is coated with a film to protect the display surface. Exercise care when peeling off this protective film since static electricity may be generated

(13) Since LCM has been assembled and adjusted with a high degree of precision, avoid applying excessive shocks to the module or making any alterations or modifications to it.

- Do not alter, modify or change the shape of the tab on the metal frame.
- Do not make extra holes on the printed circuit board, modify its shape or change the positions of components to be attached.
- Do not damage or modify the pattern writing on the printed circuit board.
- Absolutely do not modify the zebra rubber strip (conductive rubber) or heat seal connector.
- Except for soldering the interface, do not make any alterations or modifications with a soldering iron.
- Do not drop, bend or twist LCM.

Handling precaution for LCM

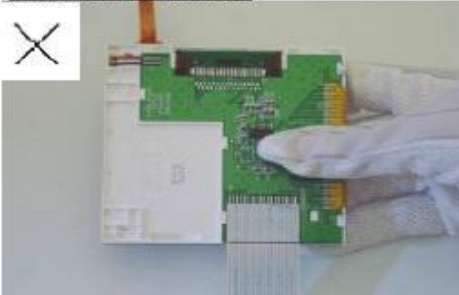
LCM is easy to be damaged.
Please note below and be careful for handling!

Correct handling:

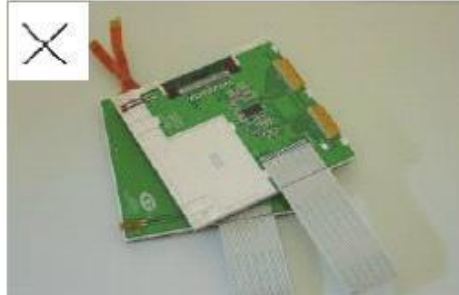


As above picture, please handle with anti-static gloves around LCM edges.

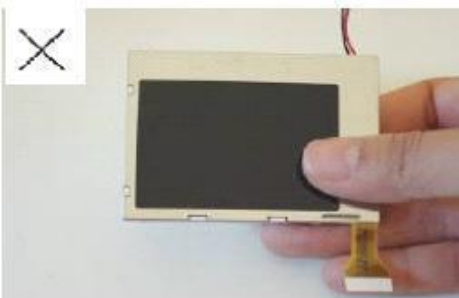
Incorrect handling:



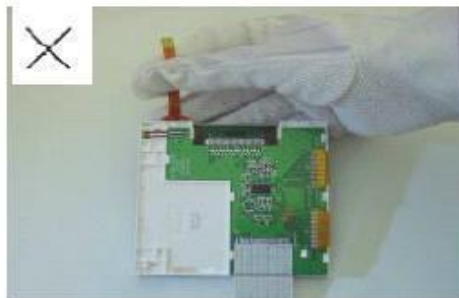
Please don't touch IC directly.



Please don't stack LCM.



Please don't hold the surface of panel.

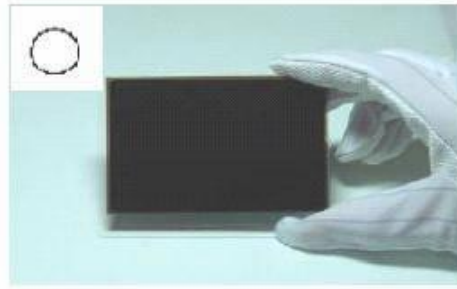


Please don't stretch interface of output, such as FPC cable.

Handling precaution for LCD

LCD is easy to be damaged.
Please note below and be careful for handling!

Correct handling:

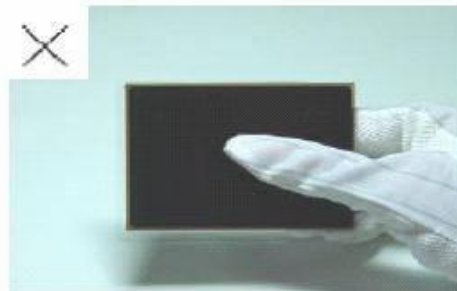


As above photo, please handle with anti-static gloves around LCD edges.

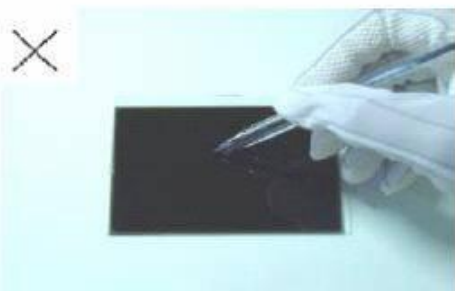
Incorrect handling:



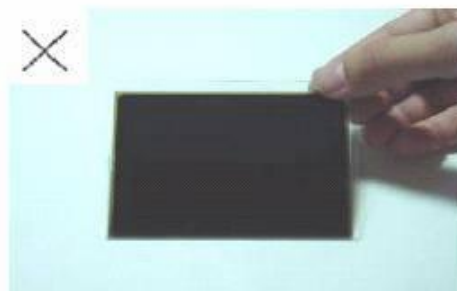
Please don't stack the LCDS.



Please don't hold the surface of LCD.



Please don't operate with sharp stick such as pens.



Please don't touch ITO glass without anti-static gloves.

Storage Precautions

When storing the LCD modules, the following precaution is necessary.

- (1) Store them in a sealed polyethylene bag. If properly sealed, there is no need for the dessicant.
- (2) Store them in a dark place. Do not expose to sunlight or fluorescent light, keep the temperature between 0°C and 35°C, and keep the relative humidity between 40%RH and 60%RH.
- (3) The polarizer surface should not come in contact with any other objects. (We advise you to store them in the anti-static electricity container in which they were shipped.

Others

Liquid crystals solidify under low temperature (below the storage temperature range) leading to defective orientation or the generation of air bubbles (black or white). Air bubbles may also be generated if the module is subject to a low temperature.

If the LCD modules have been operating for a long time showing the same display patterns, the display patterns may remain on the screen as ghost images and a slight contrast irregularity may also appear. A normal operating status can be regained by suspending use for some time. It should be noted that this phenomenon does not adversely affect performance reliability.

To minimize the performance degradation of the LCD modules resulting from destruction caused by static electricity etc., exercise care to avoid holding the following sections when handling the modules.

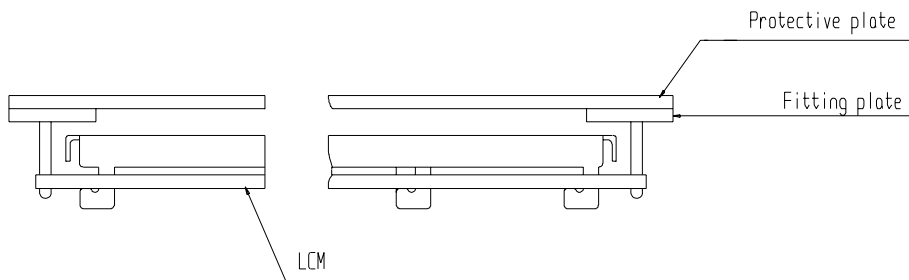
- Exposed area of the printed circuit board.
- Terminal electrode sections.

USING LCD MODULES

Installing LCD Modules

The hole in the printed circuit board is used to fix LCM as shown in the picture below. Attend to the following items when installing the LCM.

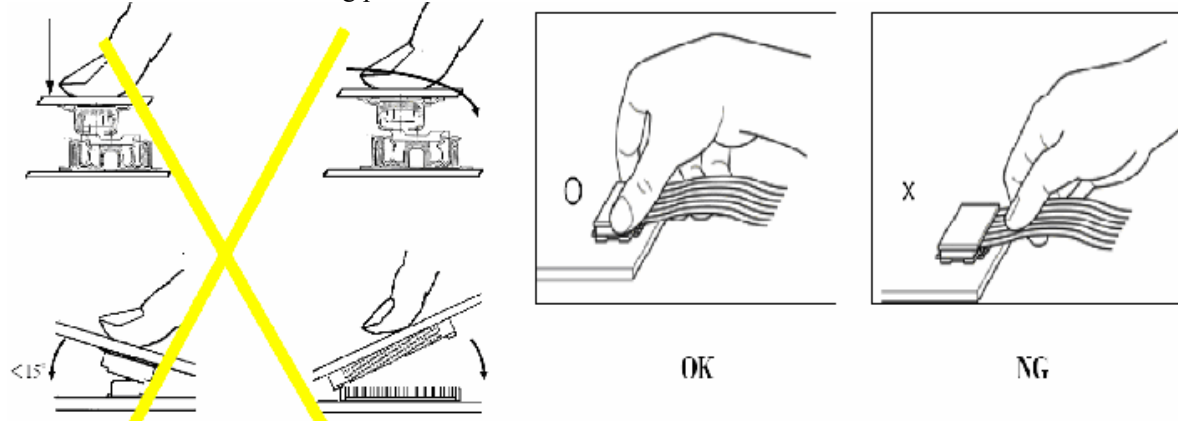
- (1) Cover the surface with a transparent protective plate to protect the polarizer and LC cell.



- (2) When assembling the LCM into other equipment, the spacer to the bit between the LCM and the fitting plate should have enough height to avoid causing stress to the module surface, refer to the individual specifications for measurements. The measurement tolerance should be ± 0.1 mm.

Precaution for assemble the module with BTB connector:

Please note the position of the male and female connector position, don't assemble or assemble like the method which the following picture shows



Precaution for soldering to the LCM

	Hand soldering	Machine drag soldering	Machine press soldering
No ROHS product	290°C ~350°C. Time : 3-5S.	330°C ~350°C. Speed : 4-8 mm/s.	300°C ~330°C. Time : 3-6S. Press: 0.8~1.2Mpa
ROHS product	340°C ~370°C. Time : 3-5S.	350°C ~370°C. Time : 4-8 mm/s.	330°C ~360°C. Time : 3-6S. Press: 0.8~1.2Mpa

(1) If soldering flux is used, be sure to remove any remaining flux after finishing to soldering operation. (This does not apply in the case of a non-halogen type of flux.) It is recommended that you protect the LCD surface with a cover during soldering to prevent any damage due to flux spatters.

(2) When soldering the electroluminescent panel and PC board, the panel and board should not be detached more than three times. This maximum number is determined by the temperature and time conditions mentioned above, though there may be some variance depending on the temperature of the soldering iron.

(3) When remove the electroluminescent panel from the PC board, be sure the solder has completely melted, the soldered pad on the PC board could be damaged.

Precautions for Operation

(1) Viewing angle varies with the change of liquid crystal driving voltage (VLCD). Adjust VLCD to show the best contrast.

(2) It is an indispensable condition to drive LCD's within the specified voltage limit since the higher voltage then the limit cause the shorter LCD life. An electrochemical reaction due to direct current causes LCD's undesirable deterioration, so that the use of direct current drive should be avoided.

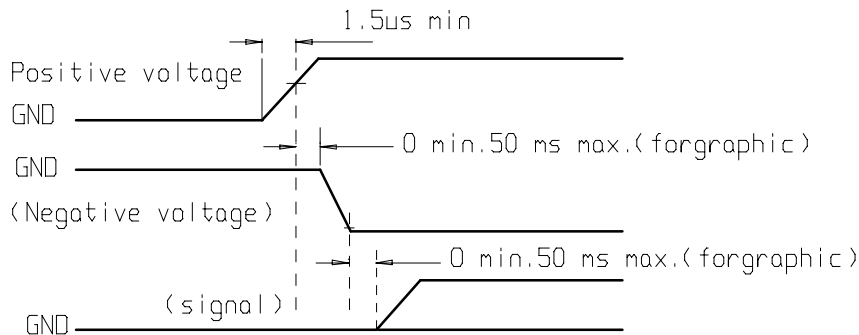
(3) Response time will be extremely delayed at lower temperature than the operating temperature range and on the other hand at higher temperature LCD's show dark color in them. However those phenomena do not mean malfunction or out of order with LCD's, Which will come back in the specified operating temperature.

(4) If the display area is pushed hard during operation, the display will become abnormal. However, it will return to normal if it is turned off and then back on.

(5) A slight dew depositing on terminals is a cause for electro-chemical reaction resulting in terminal open circuit. Usage under the maximum operating temperature,50%RH or less is required.

(6) Input each signal after the positive/negative voltage becomes stable.

(7) Please keep the temperature within specified range for use and storage. Polarization degradation, bubble generation or polarizer peel-off may occur with high temperature and high humidity.





Safety

(1) It is recommended to crush damaged or unnecessary LCDs into pieces and wash them off with solvents such as acetone and ethanol, which should later be burned.

(2) If any liquid leaks out of a damaged glass cell and comes in contact with the hands, wash off thoroughly with soap and water.

Limited Warranty

Unless agreed between All Shore and customer, All Shore will replace or repair any of its LCD modules which are found to be functionally defective when inspected in accordance with All Shore LCD acceptance standards (copies available upon request) for a period of one year from date of production. Cosmetic/visual defects must be returned to All Shore within 90 days of shipment. Confirmation of such date shall be based on data code on product. The warranty liability of All Shore limited to repair and/or replacement on the terms set forth above. All Shore will not be responsible for any subsequent or consequential events.

Return LCM under warranty

No warranty can be granted if the precautions stated above have been disregarded. The typical examples of violations are :

- Broken LCD glass.
- PCB eyelet is damaged or modified.
- PCB conductors damaged.
- Circuit modified in any way, including addition of components.
- PCB tampered with by grinding, engraving or painting varnish.
- Soldering to or modifying the bezel in any manner.

Module repairs will be invoiced to the customer upon mutual agreement. Modules must be returned with sufficient description of the failures or defects. Any connectors or cable installed by the customer must be removed completely without damaging the PCB eyelet, conductors and terminals.

■ PRIOR CONSULT MATTER

- 1.①For All Shore standard products, we keep the right to change material, process ... for improving the product property without notice on our customer.
- ②For OEM products, if any change needed which may affect the product property, we will consult with our customer in advance.
2. If you have special requirement about reliability condition, please let us know before you start the test on our samples.