



## ASI-T-240DA3MUN/D

Item	Contents	Unit
Size	2.4	inch
Resolution	240 (RGB) x 320	/
Interface	MCU	/
Technology type	a-Si TFT	/
Pixel pitch	0.153 x 0.153	mm
Pixel Configuration	RGB stripes	
Outline Dimension (W x H x D)	42.70 x 60.20 x 2.40	mm
Active Area	36.72 x 48.96	mm
Display Mode	Transmissive	/
Backlight Type	LED	/
Viewing Direction	6	o'clock
Display Driver IC	ST7789V	/
Weight	TBD	g



## Record of Revision

Date	Revision No.	Summary
2018-09-07	1.0	Rev 1.0 was issued



## 1. Scope

This data sheet is to introduce the specification of ASI-T-240DA3MUN/D active matrix TFT module. It is composed of a color TFT-LCD panel, driver IC, FPC and a backlight unit. The 2.4" display area contains 240(RGB) x 320 pixels.

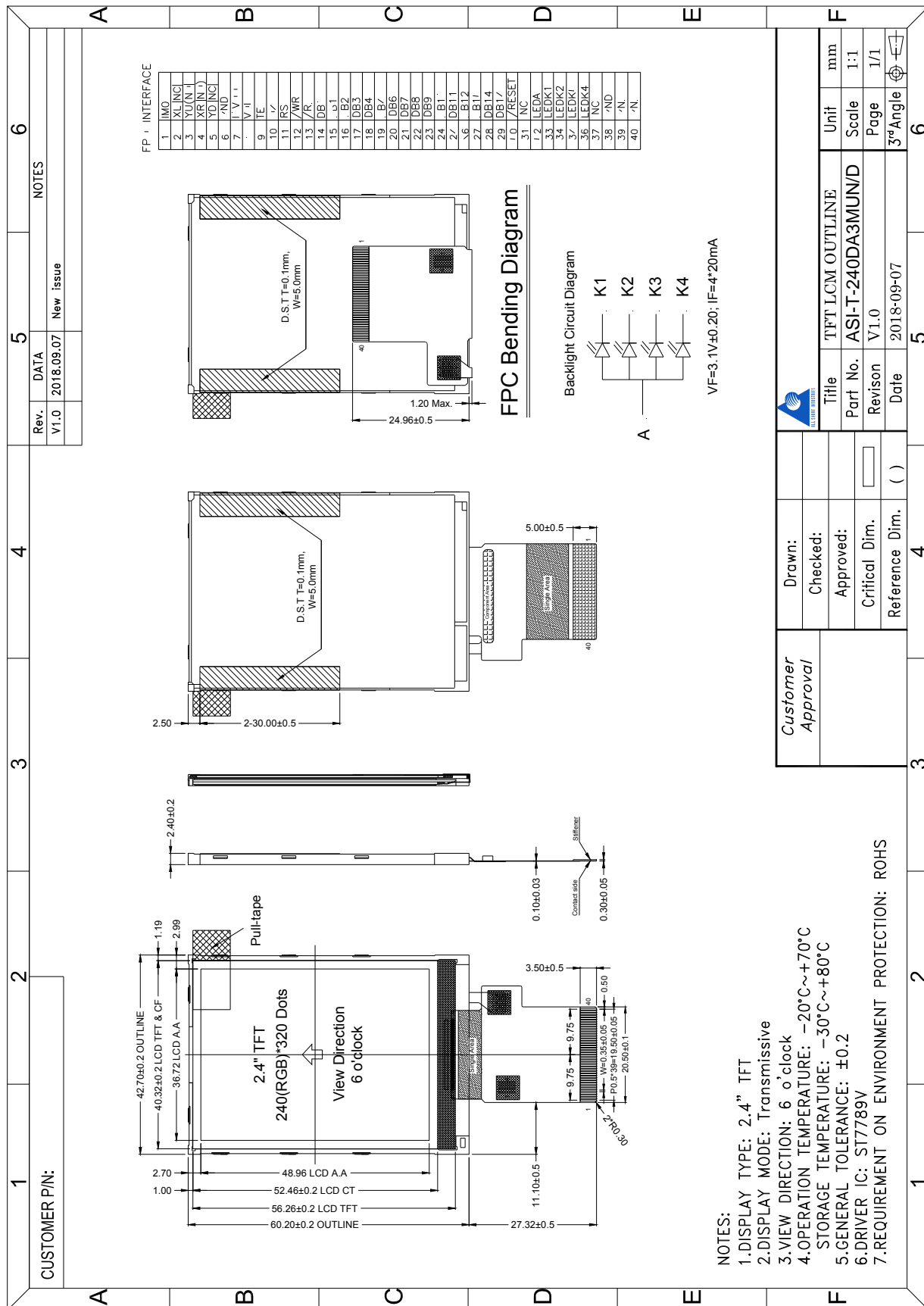
## 2. Application

Digital equipments which need color display, mobile navigator/video systems.

## 3. General Information

Item	Contents	Unit
Size	2.4	inch
Resolution	240 (RGB) x 320	/
Interface	MCU	/
Technology type	a-Si TFT	/
Pixel pitch	0.153 x 0.153	mm
Pixel Configuration	RGB stripes	
Outline Dimension (W x H x D)	42.70 x 60.20 x 2.40	mm
Active Area	36.72 x 48.96	mm
Display Mode	Transmissive	/
Backlight Type	LED	/
Viewing Direction	6	o'clock
Display Driver IC	ST7789V	/
Weight	TBD	g

### 4. Outline Drawing



## 5. Interface signals

Pin No	Symbol	Function
1	IM0	The MCU interface mode select pin. IM0=1, DB[15:8]; IM0=0, DB[15:0].
2	XL(NC)	Touch panel pin (No connection)
3	YU(NC)	Touch panel pin (No connection)
4	XR(NC)	Touch panel pin (No connection)
5	YD(NC)	Touch panel pin (No connection)
6	GND	Power ground
7	IOVCC	Digital IO pad power supply (1.8V/2.8V)
8	VCI	Analog power supply
9	TE	Tearing effect signal is used to synchronize MCU to frame memory writing.
10	CS	Chip select pin
11	RS	Command and Data select pin
12	/WR	Write enable pin
13	/RD	Read enable pin
14~29	DB0~DB15	Data bus
30	/RESET	Reset pin
31	NC	No connection
32	LEDA	Anode pin of Backlight
33	LEDK1	Cathode pin of Backlight
34	LEDK2	Cathode pin of Backlight
35	LEDK3	Cathode pin of Backlight
36	LEDK4	Cathode pin of Backlight
37	NC	No connection
38~40	GND	Power ground

## 6. Absolute maximum Ratings

### 6.1. Electrical Absolute max. ratings

Parameter	Symbol	MIN	MAX	Unit	Remark
Logic Supply Voltage	VCC	-0.3	4.6	V	
Input Voltage	VIN	-0.3	VCC+0.3	V	

### 6.2. Environment Conditions

Item	Symbol	MIN	MAX	Unit	Remark
Operating Temperature	TOPR	-20	70	°C	
Storage Temperature	TSTG	-30	80	°C	

## 7. Electrical Specifications

### 7.1 Electrical characteristics

Ta = 25 °C, GND=0V

Item	Symbol	MIN	TYP	MAX	Unit	Remark
Supply Voltage	VCC	2.5	2.8	3.3	V	
Input Signal Voltage	VIL	VSSD	--	0.3*IOVCC	V	VDDI=1.65~3.3V
	VIH	0.7*IOVCC	--	IOVCC	V	
LCD Drive Power Current	ILCD	--	TBD	--	mA	

Note1: Vcom must be adjusted to optimize display quality: Cross-talk, Contrast Ratio and etc.

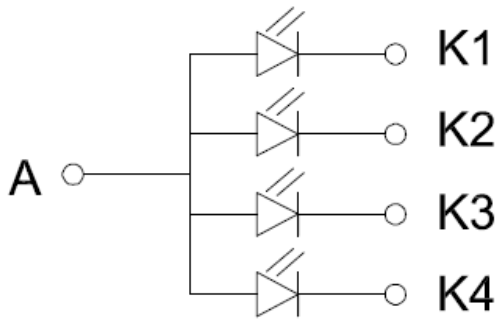
### 7.2 LED Backlight

Ta=25°C

Item	Symbol	MIN	TYP	MAX	Unit	Remark
Forward Current	IF	--	80	--	mA	
Forward Voltage	VF	2.9	3.1	3.3	V	If=20mA
LED Life time	--	--	30,000	--	Hrs	Note

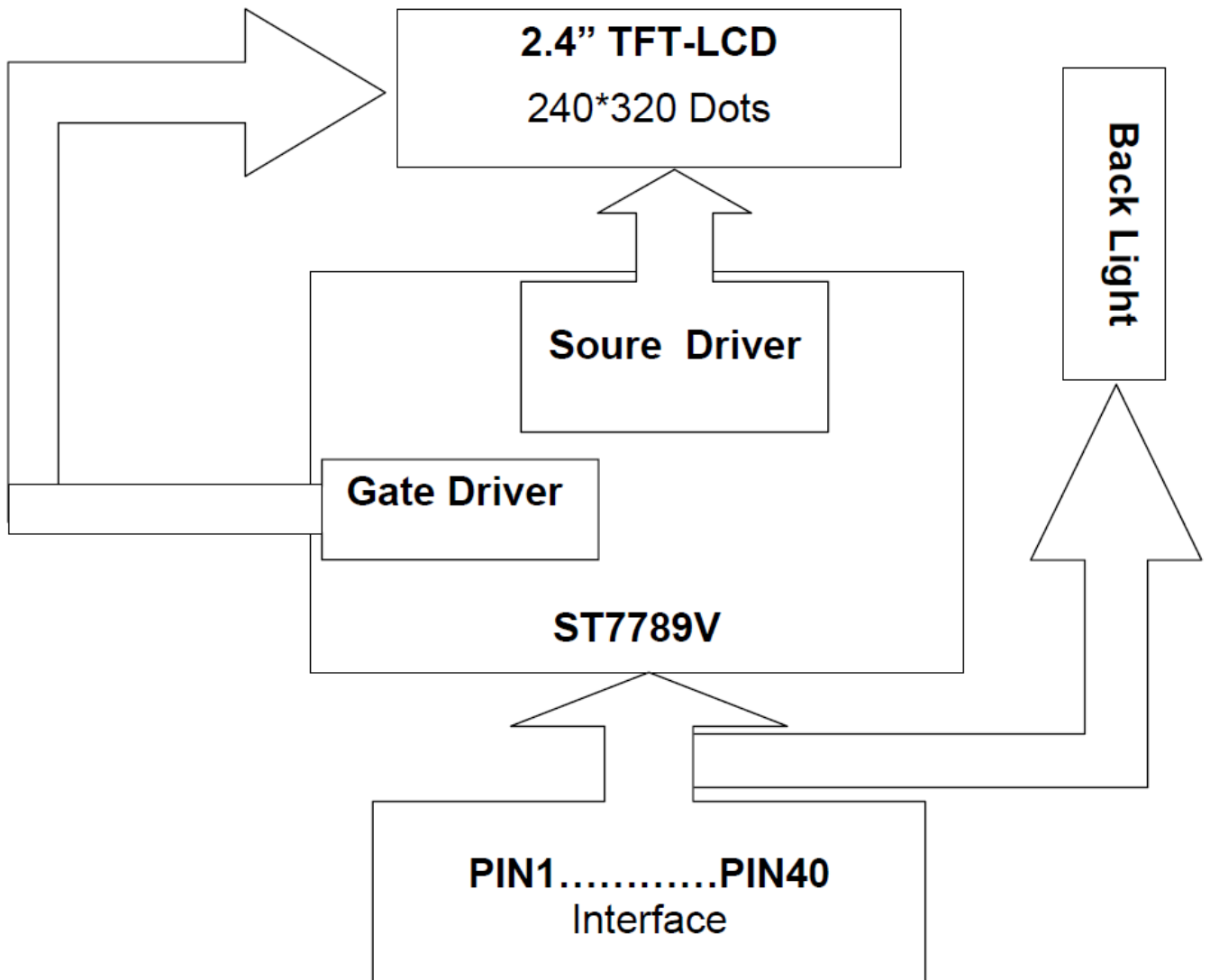
Note: The "LED life time" is defined as the module brightness decrease to 50% original brightness at Ta=25°C and IL =80mA. The LED lifetime could be decreased if operating IL is larger than 80mA.

Backlight Circuit Diagram



$V_F=3.1V\pm 0.20$ ;  $I_F=4*20mA$

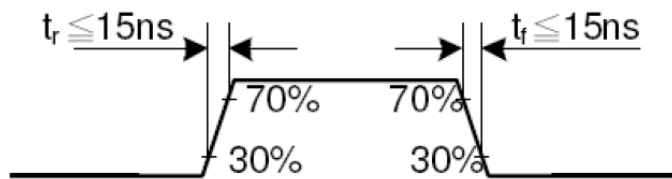
7.3 Schematic of LCD module system



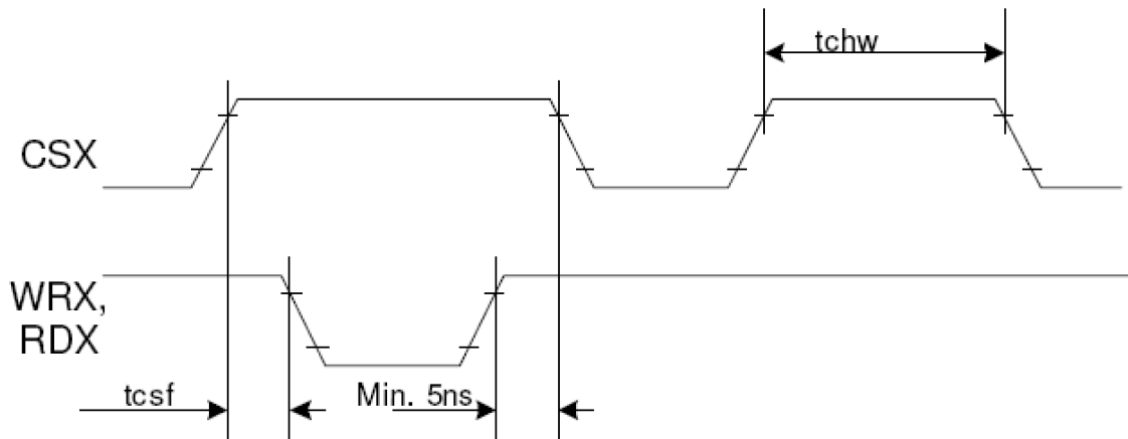




	trdlfm	Read control L duration(FM)	355	-	ns	
RDX (ID)	trc	Read cycle(ID)	160	-	ns	
	trdh	Read control pulse H duration	90	-	ns	
	trdl	Read control pulse L duration	45	-	ns	
D[17:0] D[17:10]&D[8:1] D[17:10] D[17:9]	tdst	Write data setup time	10		ns	For maximum CL=30pF, For minimum CL=8pF
	tdht	Write data hold time	10		ns	
	trat	Read access time	-	40	ns	
	tratfm	Read access time	-	340	ns	
	trod	Read output disable time	20	80	ns	

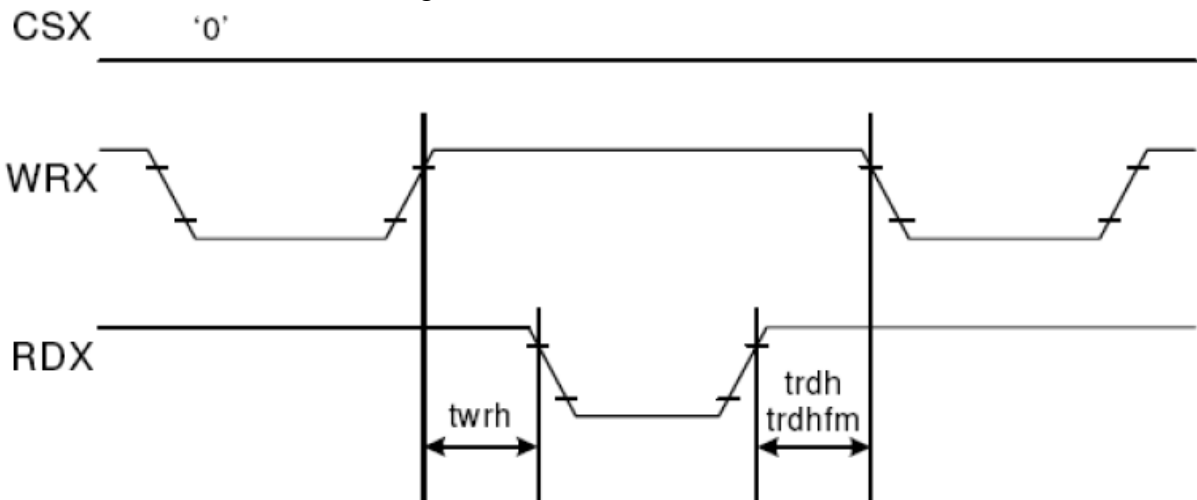


CSX timings:



Note: Logic high and low levels are specified as 30% and 70% of VDDI for input signals.

Write to read or read to write timings:



Note: Logic high and low levels are specified as 30% and 70% of VDDI for input signals.

### 9. Optical Specification

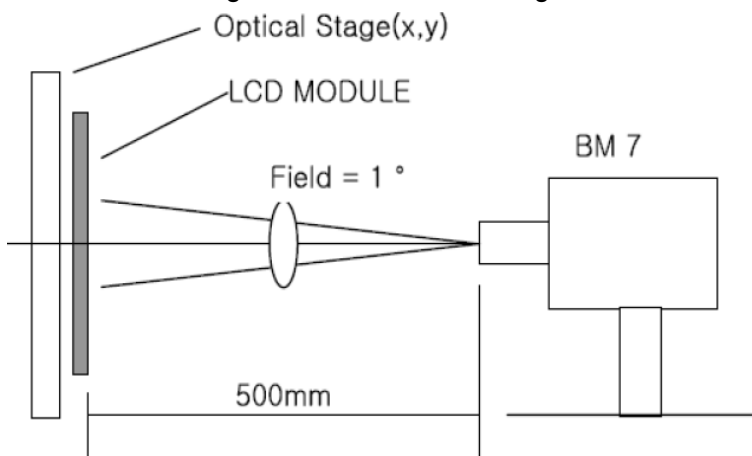
Ta=25°C

Item	Symbol	Condition	Min	Typ.	Max.	Unit	Remark
Contrast Ratio	CR	$\theta=0^\circ$	--	250	--		Note1 Note2
Response Time	T <sub>on</sub> +T <sub>off</sub>	25°C	--	30	--	ms	Note1 Note3
View Angles	$\Theta T$	CR $\geq$ 10	--	45	--	Degree	Note 4
	$\Theta B$		--	20	--		
	$\Theta L$		--	45	--		
	$\Theta R$		--	45	--		
Chromaticity	White	Brightness is on	x	0.288	0.308	0.328	Note5, Note1
			y	0.305	0.325	0.345	
	Red		x	0.592	0.612	0.632	
			y	0.309	0.329	0.349	
	Green		x	0.279	0.299	0.319	
			y	0.547	0.567	0.587	
	Blue		x	0.124	0.144	0.164	
			y	0.090	0.110	0.130	
Luminance	L		290	320	380	cd/m <sup>2</sup>	Note1 Note6
Uniformity	U		80	-	-	%	Note1 Note7

Note 1: Definition of optical measurement system.

Temperature = 25°C(±3°C)

LED back-light: ON, Environment brightness < 150 lx

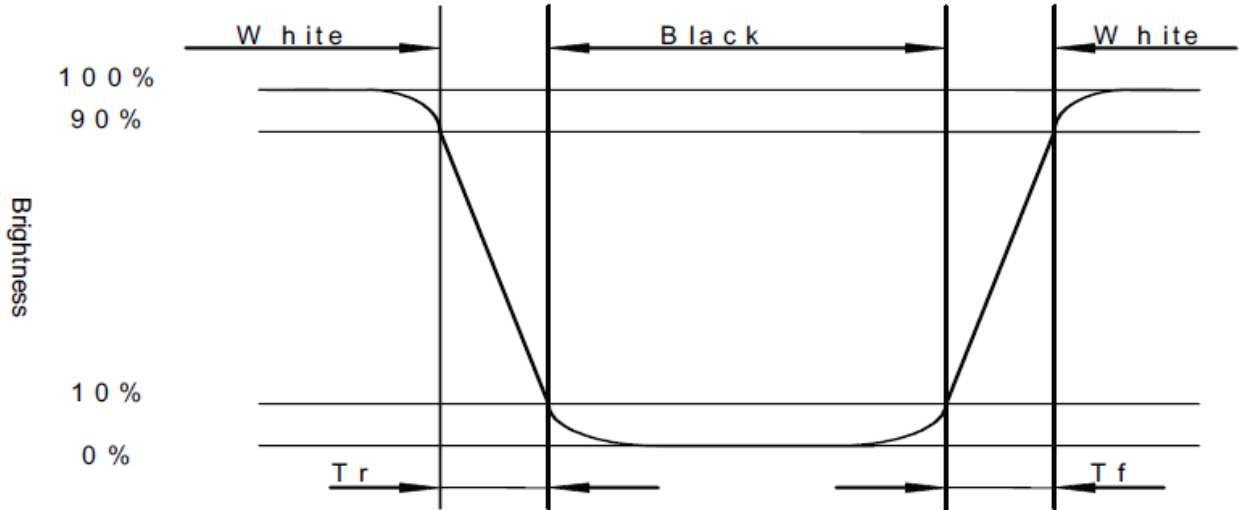


Note 2: Contrast ratio is defined as follow:

$$\text{Contrast Ratio} = \frac{\text{Surface Luminance with all white pixels}}{\text{Surface Luminance with all black pixels}}$$

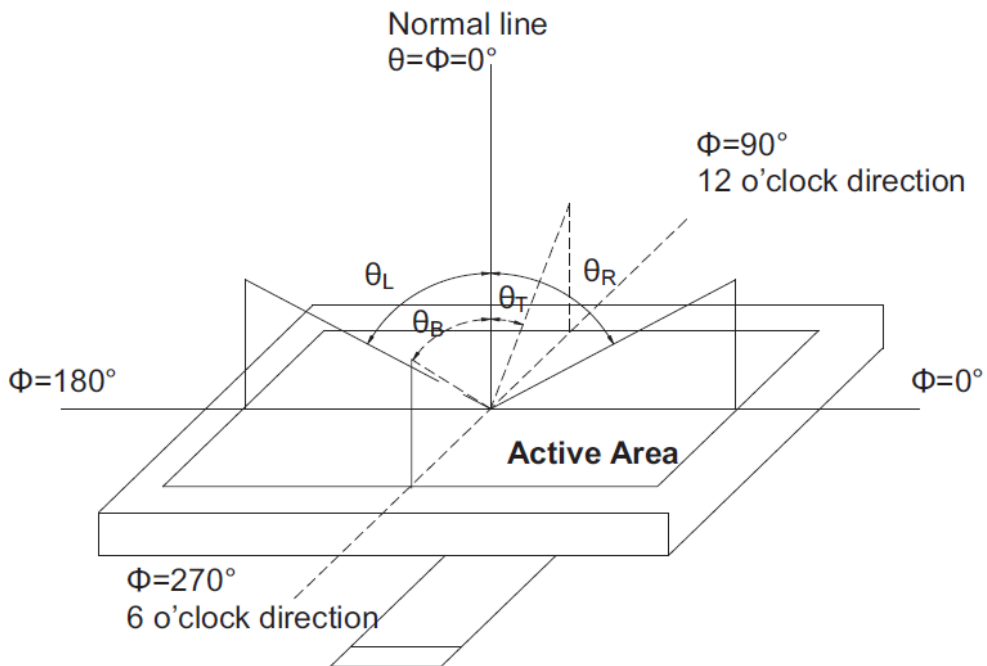
Note 3: Response time is defined as follow:

Response time is the time required for the display to transition from black to white (Rise Time,  $T_r$ ) and from white to black (Decay Time,  $T_f$ ).



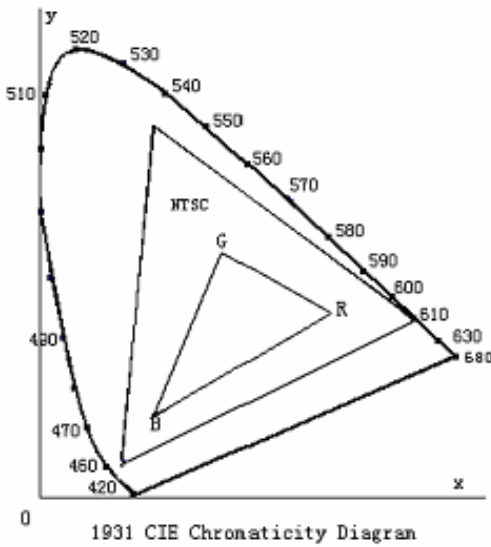
Note 4: Viewing angle range is defined as follow:

Viewing angle is measured at the center point of the LCD.



Note 5: Color chromaticity is defined as follow: (CIE1931)

Color coordinates measured at center point of LCD.



$$S = \frac{\text{area of RGB triangle}}{\text{area of NTSC triangle}} \times 100\%$$

Note 6: Luminance is defined as follow:

Luminance is defined as the brightness of all pixels “White” at the center of display area on optimum contrast.

Note 7: Luminance Uniformity is defined as follow:

Active area is divided into 9 measuring areas (Refer Fig. 2). Every measuring point is placed at the center of each measuring area.

$$\text{Uniformity (U)} = \frac{\text{Minimum Luminance( brightness ) in 9 points}}{\text{Maximum Luminance( brightness ) in 9 points}}$$

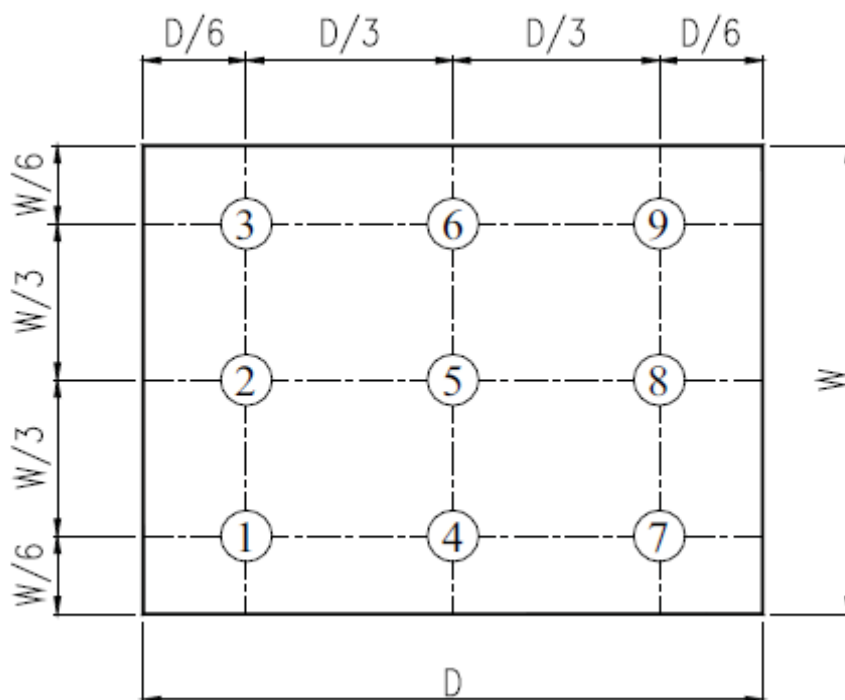


Fig. 2 Definition of uniformity

10. Environmental / Reliability Tests

No	Test Item	Condition	Judgment criteria
1	High Temp Operation	Ts=+70°C, 96hrs	Per table in below
2	Low Temp Operation	Ta=-20°C, 96hrs	Per table in below
3	High Temp Storage	Ta=+80°C, 96hrs	Per table in below
4	Low Temp Storage	Ta=-30°C, 96hrs	Per table in below
5	High Temp & High Humidity Storage	Ta=+60°C, 90% RH 96hours	Per table in below (polarizer discoloration is excluded)
6	Thermal Shock (Non-operation)	-20°C 30 min~+70°C 30 min, Change time:5min, 10 Cycles	Per table in below
7	ESD (Operation)	C=150pF, R=330Ω · 5points/panel Air:±8KV, 5times; Contact:±4KV, 5 times;	Per table in below
8	Vibration (Non-operation)	Frequency range:10~55Hz, Stroke:1.5mm Sweep:10Hz~55Hz~10Hz 2 hours for each direction of X.Y.Z.	Per table in below
9	Shock (Non-operation)	60G 6ms, ±X,±Y,±Z 3times, for each direction	Per table in below
10	Package Drop Test	Height:80 cm, 1 corner, 3 edges, 6 surfaces	Per table in below

INSPECTION	CRITERION(after test)
Appearance	No Crack on the FPC, on the LCD Panel
Alignment of LCD Panel	No Bubbles in the LCD Panel No other Defects of Alignment in Active area
Electrical current	Within device specifications
Function / Display	No Broken Circuit, No Short Circuit or No Black line No Other Defects of Display

## 11. Precautions for Use of LCD Modules

### 11.1 Safety

The liquid crystal in the LCD is poisonous. Do not put it in your mouth. If the liquid crystal touches your skin or clothes, wash it off immediately using soap and water.

### 11.2 Handling

- A. The LCD and touch panel is made of plate glass. Do not subject the panel to mechanical shock or to excessive force on its surface.
- B. Do not handle the product by holding the flexible pattern portion in order to assure the reliability
- C. Transparency is an important factor for the touch panel. Please wear clear finger sacks, gloves and mask to protect the touch panel from finger print or stain and also hold the portion outside the view area when handling the touch panel.
- D. Provide a space so that the panel does not come into contact with other components.
- E. To protect the product from external force, put a covering lens (acrylic board or similar board) and keep an appropriate gap between them.
- F. Transparent electrodes may be disconnected if the panel is used under environmental conditions where dew condensation occurs.
- G. Property of semiconductor devices may be affected when they are exposed to light, possibly resulting in IC malfunctions.
- H. To prevent such IC malfunctions, your design and mounting layout shall be done in the way that the IC is not exposed to light in actual use.

### 11.3 Static Electricity

- A. Ground soldering iron tips, tools and testers when they are in operation.
- B. Ground your body when handling the products.
- C. Power on the LCD module before applying the voltage to the input terminals.
- D. Do not apply voltage which exceeds the absolute maximum rating.
- E. Store the products in an anti-electrostatic bag or container.
- F. Peel off the LCM protective film slowly since static electricity may be generated.

### 11.4 Storage

- A. Store the products in a dark place at  $+25^{\circ}\text{C} \pm 10^{\circ}\text{C}$  with low humidity (40% RH to 60% RH). Don't expose to sunlight or fluorescent light.
- B. Storage in a clean environment, free from dust, active gas, and solvent.

### 11.5 Cleaning

- A. Do not wipe the touch panel with dry cloth, as it may cause scratch.
- B. Wipe off the stain on the product by using soft cloth moistened with ethanol. Do not allow ethanol to get in between the upper film and the bottom glass. It may cause peeling issue or defective operation. Do not use any organic solvent or detergent other than ethanol.

### 11.6 Cautions for installing and assembling

- A. Bezel edge must be positioned in the area between the Active area and View area. The bezel may press the touch screen and cause activation if the edge touches the active area. A gap of approximately 0.5mm is needed between the bezel and the top electrode. It may cause unexpected activation if the gap is too narrow. There is a tolerance of 0.2 to 0.3mm for the outside dimensions of the touch panel and tail. A gap must be made to absorb the tolerance in the case and connector.
- B. In order to make the display assembly stable and firm, ASI recommends to design some supporting at the display backside, especially for the display with tape-attached touch panel, such supporting is important and essential, or else, the display may drop-off from front after some period of time.
- C. Do not display the fixed pattern for a long time because it may develop image sticking due to the LCD structure. If the screen is displayed with fixed pattern, use a screen saver.

